

Magical Water Blossoms Template

Instructions:

Tip: If you do not want to make a folded and cut (kirigami) version of the blossom, skip Steps 3 & 4 and use template 2

Step 1 Print template on an 8 1/2" X 11" sheet of paper

Step 2 Cut out individual squares along dotted line.

Step 3 Fold along line A. Fold along line B. Fold along line C. Fold along Line D.

Step 4 Cut out blossoms along solid black line. Open.

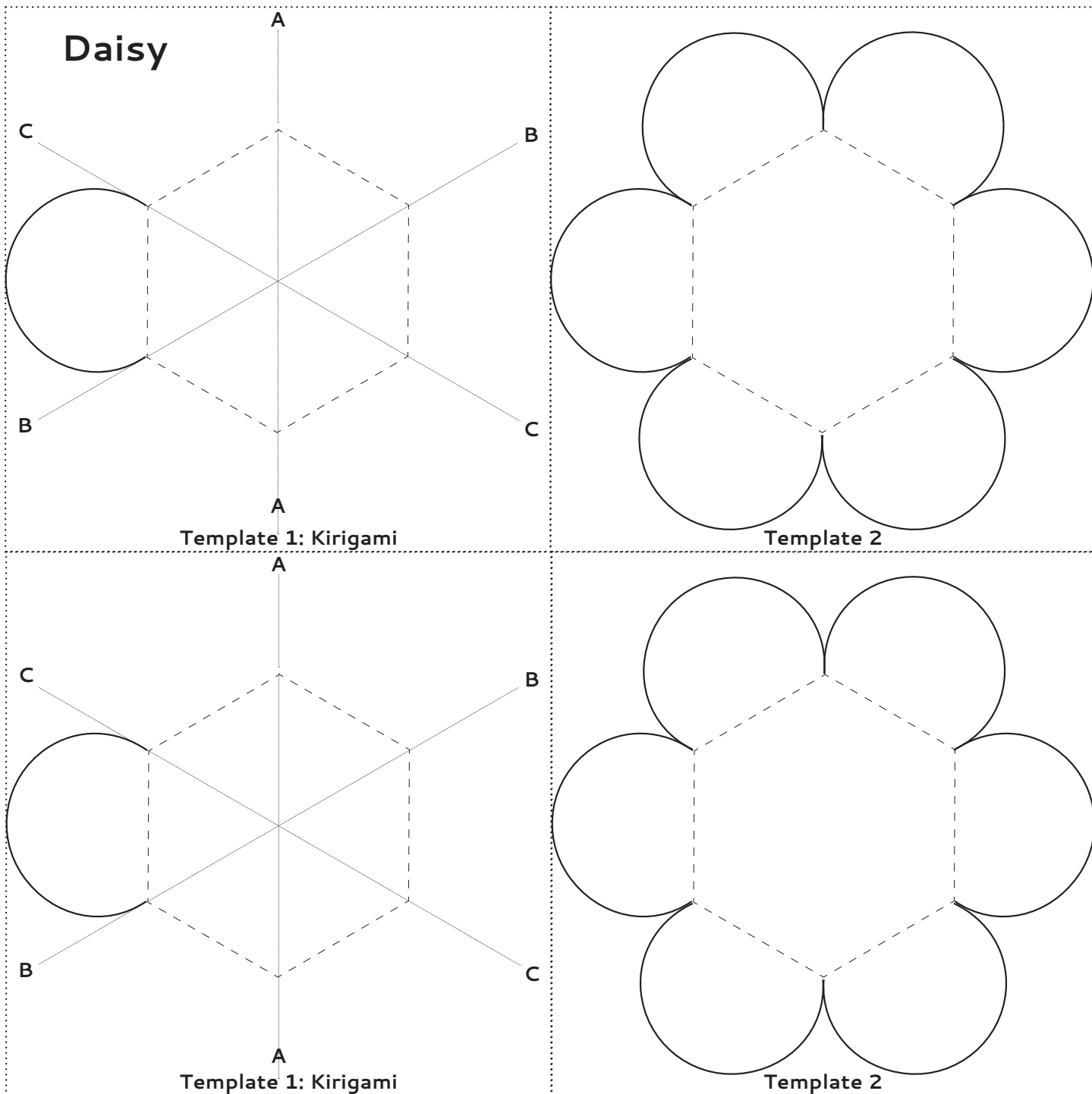
Step 5 Color the side with the dotted lines using Koi Brush Pens or water based markers

Step 6 Turn the blossom over and add details in black permanent marker such as Pigma Sensei Pens.

Step 7 Fold petals along dashed lines. The black details should be in the inside of the blossom

Step 8 Place the blossom in a plate filled with water.

Step 9 As the paper absorbs water the petals will open and the color will be distributed through out the entire blossom. The black details will remain.



Magical Water Blossoms Template

Instructions:

Tip: If you do not want to make a folded and cut (kirigami) version of the blossom, skip Steps 3 & 4 and use template 2

Step 1 Print template on an 8 1/2" X 11" sheet of paper

Step 2 Cut out individual squares along dotted line.

Step 3 Fold along line A. Fold along line B. Fold along line C. Fold along Line D.

Step 4 Cut out blossoms along solid black line. Open.

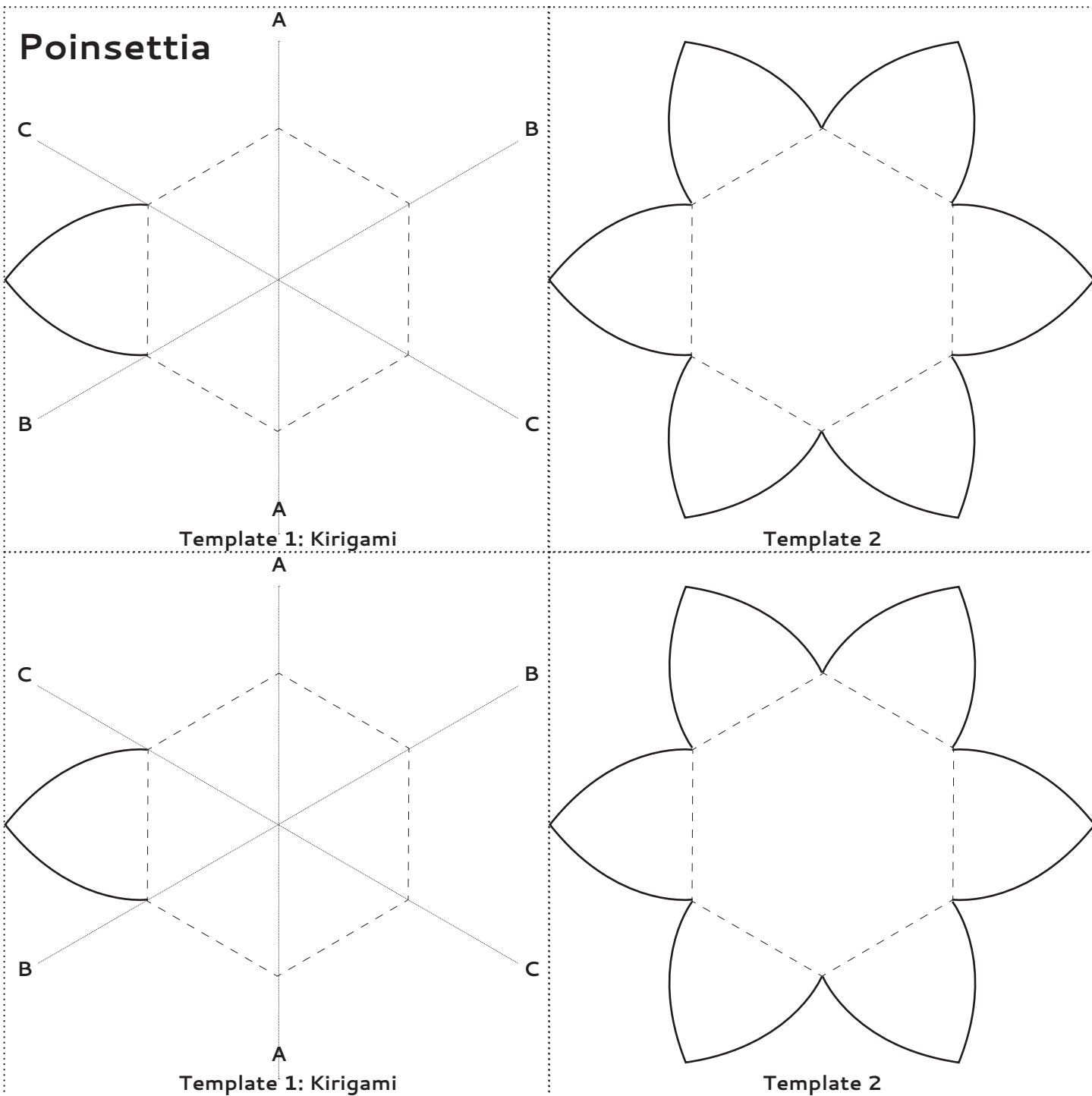
Step 5 Color the side with the dotted lines using Koi Brush Pens or water based markers

Step 6 Turn the blossom over and add details in black permanent marker such as Pigma Sensei Pens.

Step 7 Fold petals along dashed lines. The black details should be in the inside of the blossom

Step 8 Place the blossom in a plate filled with water.

Step 9 As the paper absorbs water the petals will open and the color will be distributed through out the entire blossom. The black details will remain.



Magical Water Blossoms Template

Instructions:

Tip: If you do not want to make a folded and cut (kirigami) version of the blossom, skip Steps 3 & 4 and use template 2

Step 1 Print template on an 8 1/2" X 11" sheet of paper

Step 2 Cut out individual squares along dotted line.

Step 3 Fold along line A. Fold along line B. Fold along line C. Fold along Line D.

Step 4 Cut out blossoms along solid black line. Open.

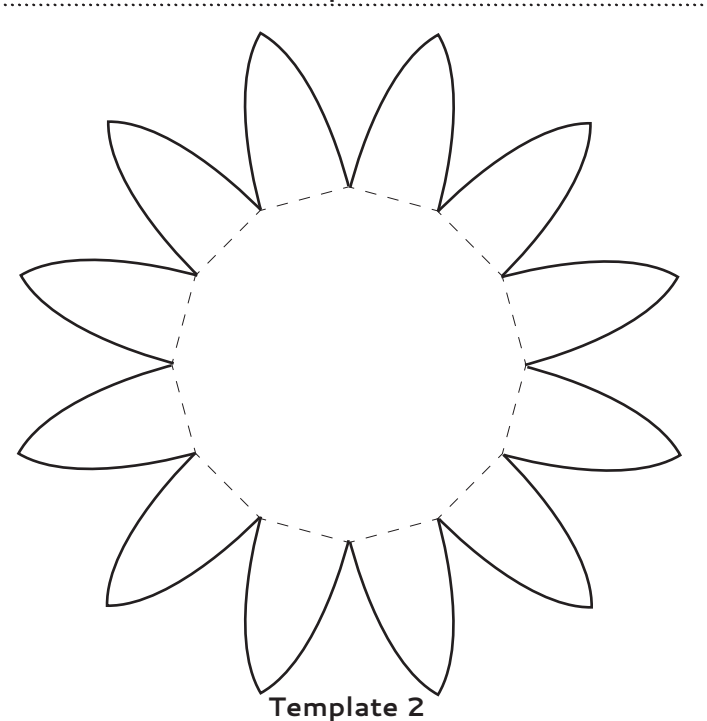
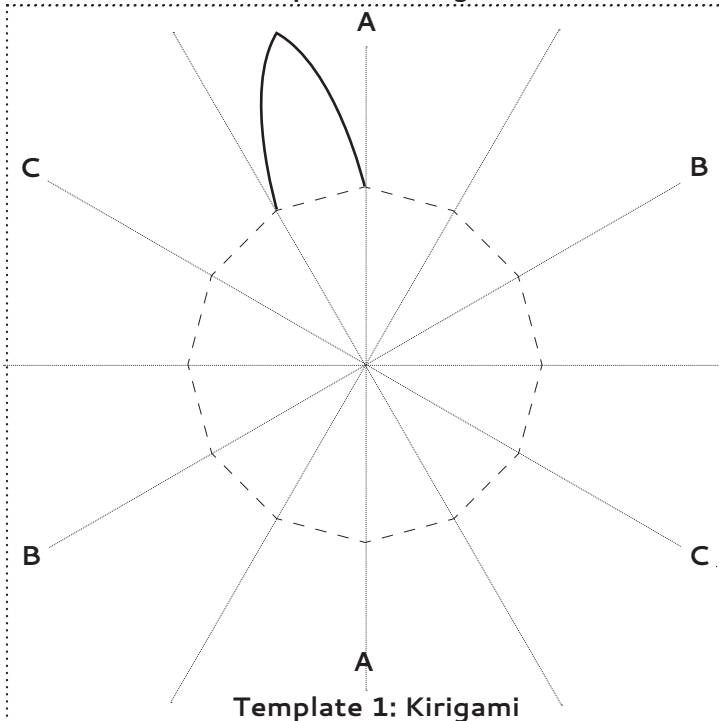
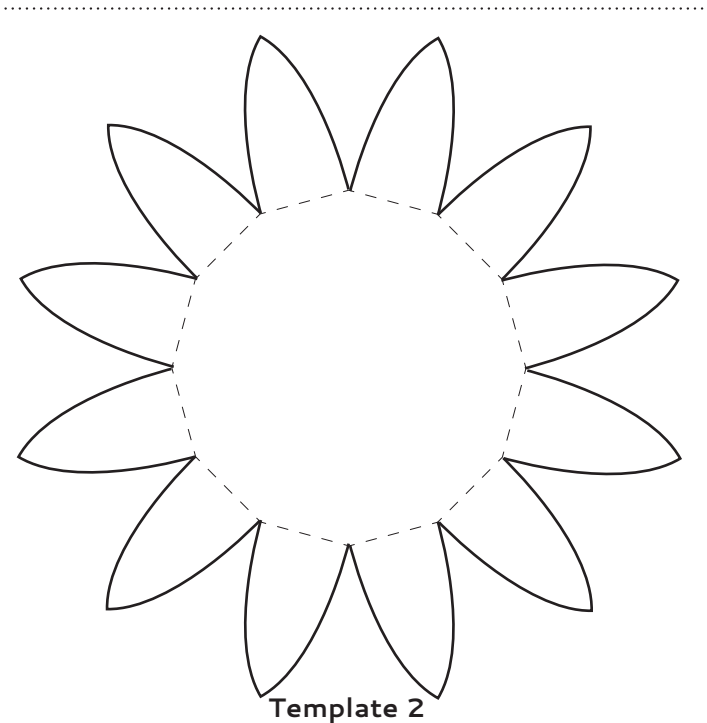
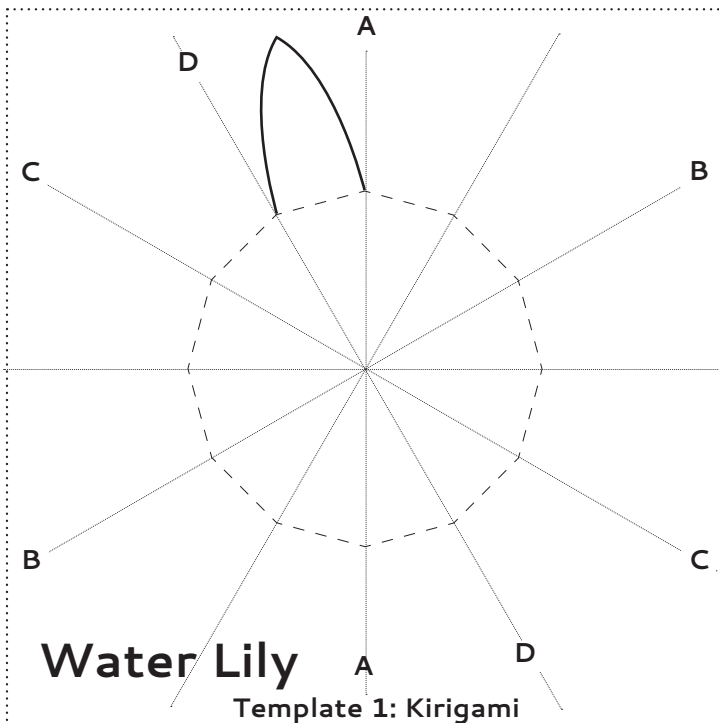
Step 5 Color the side with the dotted lines using Koi Brush Pens or water based markers

Step 6 Turn the blossom over and add details in black permanent marker such as Pigma Sensei Pens.

Step 7 Fold petals along dashed lines. The black details should be in the inside of the blossom

Step 8 Place the blossom in a plate filled with water.

Step 9 As the paper absorbs water the petals will open and the color will be distributed through out the entire blossom. The black details will remain.



Magical Water Blossoms Template

© 2018 www.babbledabbledo.com

Instructions:

Tip: If you do not want to make a folded and cut (kirigami) version of the blossom, skip Steps 3 & 4 and use template 2

Step 1 Print template on an 8 1/2" X 11" sheet of paper

Step 2 Cut out individual squares along dotted line.

Step 3 Fold along line A. Fold along line B. Fold along line C. Fold along Line D.

Step 4 Fold backwards along line E.

Step 5 Cut along solid black line. Open blossom up.

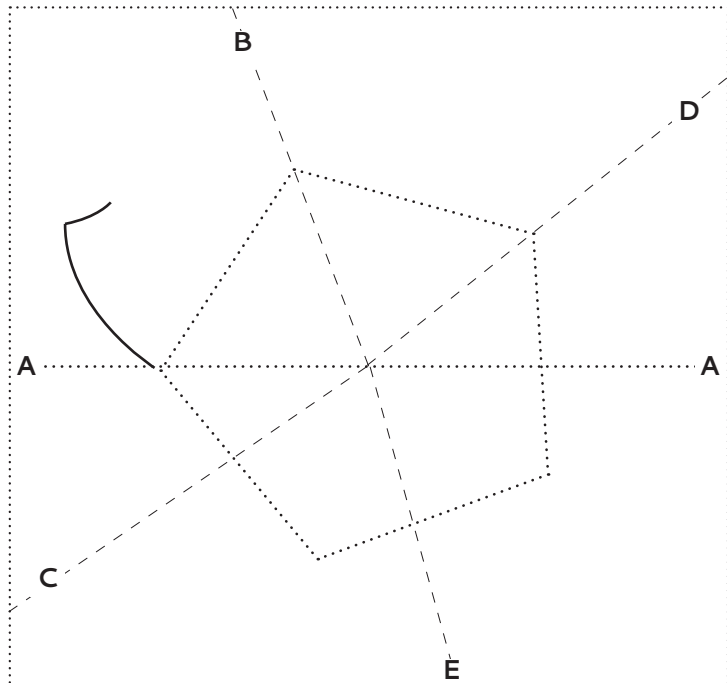
Step 6 Color the side with the dotted lines using Koi Brush Pens or water based markers

Step 7 Turn the blossom over and add details in black permanent marker such as Pigma Sensei Pens.

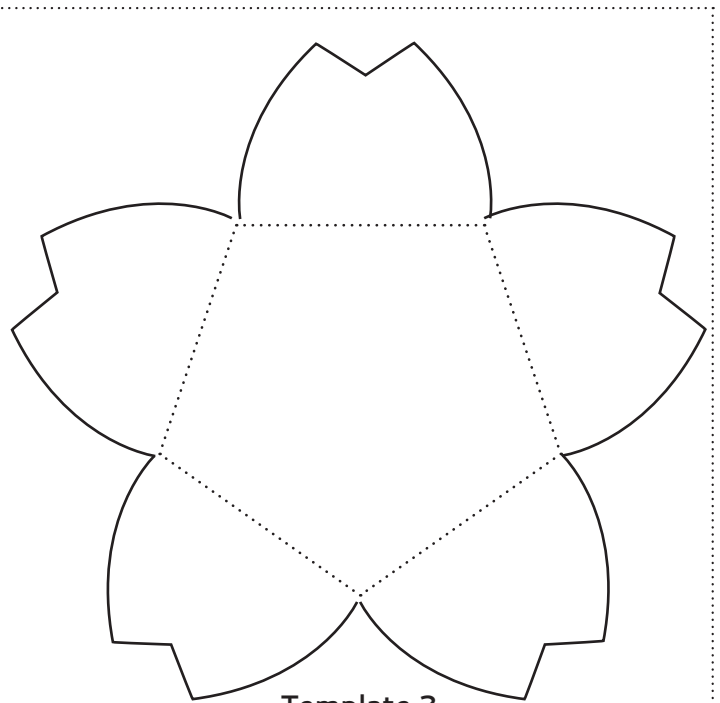
Step 7 Fold petals along dashed lines. The black details should be in the inside of the blossom

Step 8 Place the blossom in a plate filled with water.

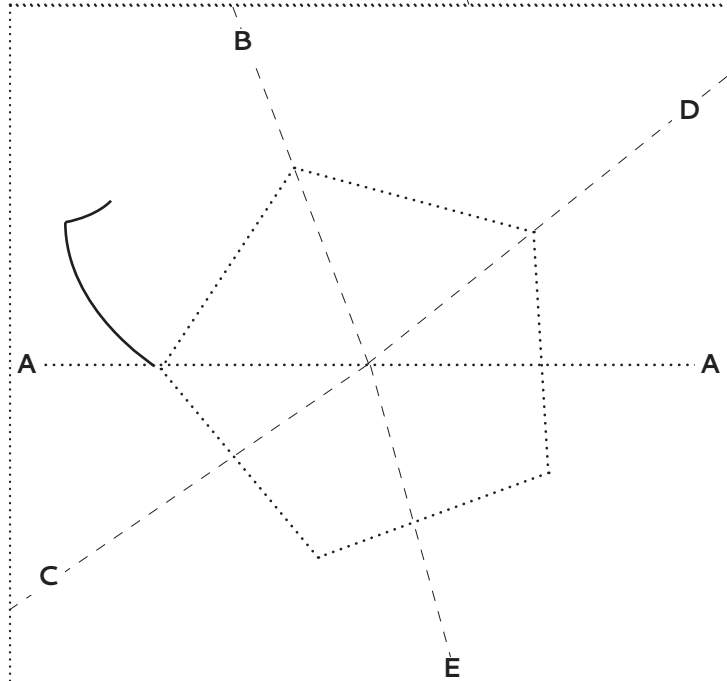
Step 9 As the paper absorbs water the petals will open and the color will be distributed through out the entire blossom. The black details will remain.



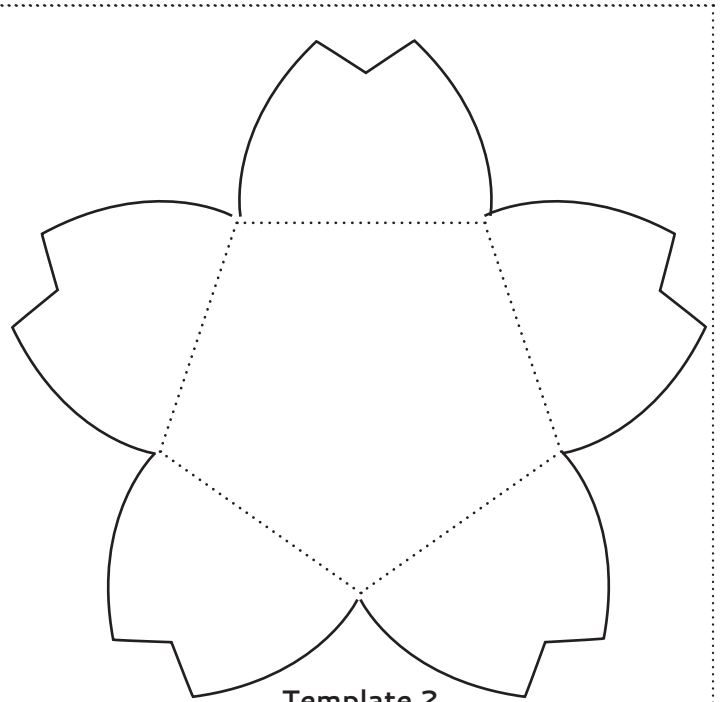
Template 1: Kirigami



Template 2



Template 1: Kirigami



Template 2

Cherry Blossom

Leaves

© 2018 www.babbledabbledo.com

Instructions:

Tip: If you do not want to make a folded and cut (kirigami) version of the leaves, skip Steps 3 & 4 and use template 2

Step 1 Print template on 8 1/2" X 11" sheet of paper

Step 2 Cut out individual squares along dotted line.

Step 3 Fold along line A. Fold along line B. Fold along line C. Fold along Line D.

Step 4 Cut out leaf along solid black line. Open.

Step 5 Color the tips of the leaves using Koi Brush Pens or water based markers

Step 6 Turn the leaf over and add details in black permanent marker such as Pigma Sensei Pens.

Step 7 Fold leaves along dashed lines.

Step 8 Place a folded flower inside the folded leaf and place in water in a plate filled with water.

Step 9 As the paper absorbs water the petals will open and the color will be distributed through out the entire blossom. If the blossom doesn't open quickly gently press the center of it into the water using a toothpick.

